

# Pommel Horse

1406104



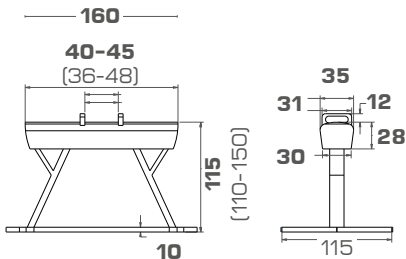
This Top Competition SPIETH product is FIG certified and is praised for its stability and wearproof quality. The newly developed rubber compound pommels provide an excellent grip under all circumstances, requiring less magnesia. The rigid wooden body, covered with carefully chosen foam and first-class chrome leather offers a comfortable firm touch and the right amount of stability at all times. The Pommel Horse comes with a built-in transport system for easy manoeuvring and a galvanised Y-shaped fixation chain and tension swivel.



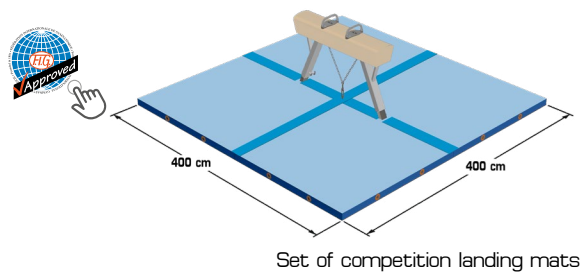
**Technical Data:**

Certificates:	FIG-certified Original System Reuther
Reference number:	1406104
Height:	Adjustable from 95-125 cm with 5 cm increments.
Pommels:	Width adjustable from 36-48 cm, covered with a newly developed high-quality rubber compound for an improved grip, mounted on an alloy base.
Body:	Covered with a high-density foam and first-class chrome leather.
Supports:	Heavy-duty powder-coated wide gage steel tubes, sliding tubes galvanised. Incorporated guidances to avoid and play in the tubes. With nonmarking floor protectors and built-in transport system.
Tension system:	Y-shaped chain with tension swivel and 4 D-shackles.
Anchoring:	1 floor anchor 1384121 or 2510268 (not included).
Floor occupation:	180x95 cm (on competition height 115 cm)
	<b>For packaging/scope of delivery data please see manual</b>

**FIG specifications:**



**Mat sets:**



**More Accessories**

- 1566064 Padding for Pommel Horse
- 1490090 PVC-Cover Pommel Horse
- 1490095 Anti-Virus PVC Cover Pommel Horse

**Required Accessories according to FIG specifications:**

- 1565862 Mat set "Moscow" for Pommel Horse
- or
- 1565867 Mat set "Basic" for Pommel Horse
  - 1389153 Magnesia stand "Munich"